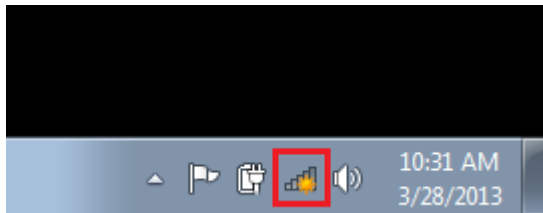


## How to Connect to SOU-Wireless (Windows)

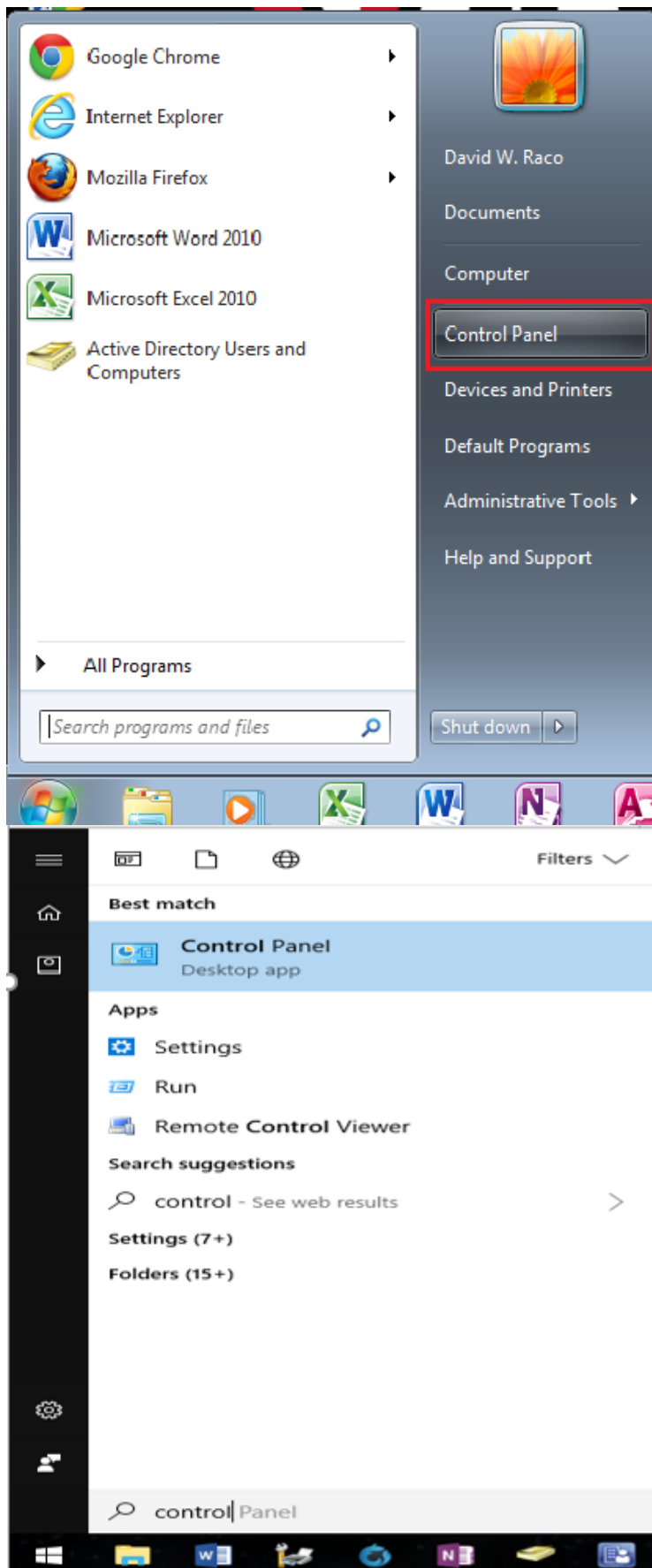
David Raco - 2019-07-25 - 0 Comments - in Windows

This article will walk you through how to connect to our open wireless network, SOU-Wireless, from any Wi-Fi-enabled computer running Windows 7 or Windows 8 or Windows 10. The screenshots featured in this tutorial were taken in Windows 7, but the process is the same for all versions.

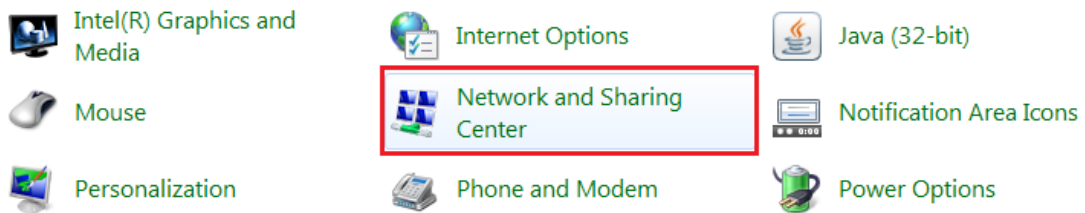
To begin, look for the Wi-Fi status icon in the bottom-right corner of your desktop.



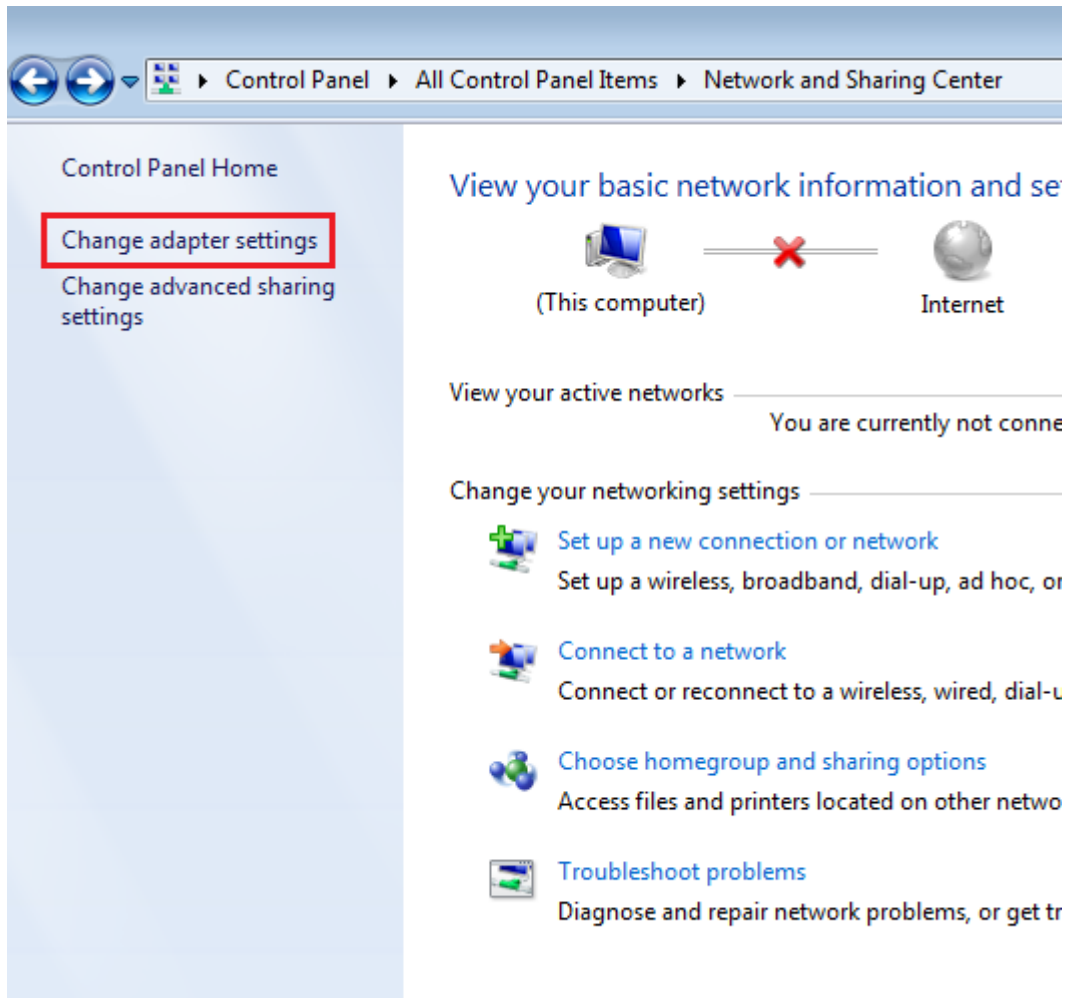
If you do not see this icon, you will need to enable your wireless adapter before proceeding. To do this, you will need to bring up the **Control Panel**. Windows 8 users who are unfamiliar with how to access the Control Panel should consult [this article](#). Windows 7 users should select Control Panel from the Start Menu as shown below. After this step, the procedure is the same for both Windows 7 and Windows 8. In windows 10, click on the start button and search for control panel.



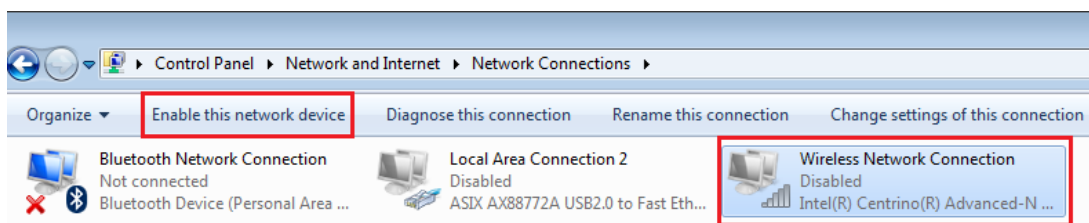
Once you have opened the Control Panel, click on **Network and Sharing Center**.



From within the Network and Sharing Center, click on **Change adapter settings**.



Find your **Wireless Network Connection** in the list, select it, and then click the **Enable this network device** button in the ribbon along the top of the screen. Your wireless adapter is now enabled. Return to the desktop.

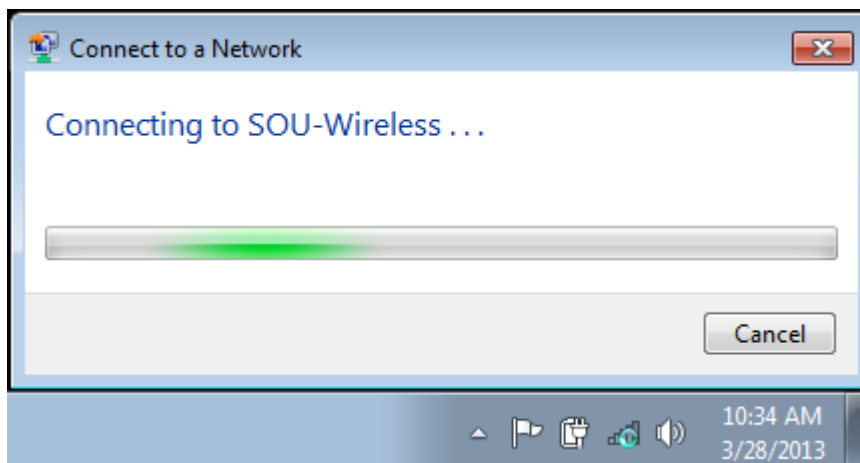


Once your wireless adapter is enabled, right-click the wireless icon (as shown in the first step) and look for **SOU-Wireless** in the list of wireless networks detected by your computer. When you've found it, click on it. This will drop down a small submenu with the

**Connect** button and a checkbox which gives you the option to **Connect automatically** to this wireless network in the future. If you select to connect automatically in the future, your computer will automatically connect to SOU-Wireless whenever the network is in range and you are not already connected to another wireless network. When you're ready to connect, **click on the Connect button.**



After you click Connect, your computer will notify you that it's connecting.



When it's finished, white bars representing the strength of your connection to SOU-Wireless will appear in the Wi-Fi status icon. If you click on the icon, it should say **Connected** next to SOU-Wireless.



If you have never connected to SOU-Wireless on your computer before, you will be prompted for your SOU credentials and will then have to download a small program, called [SafeConnect](#), to verify that you have up-to-date anti-virus protection before you can begin browsing the Internet. This process is automatic, typically only takes a minute to complete, and only has to be performed once per computer.